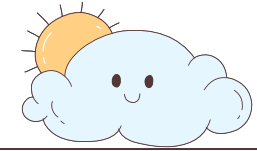
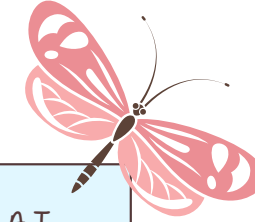


May 2026



Notes

ALL CLASSES WILL BE IN PERSON AT WILLOWS WAY. TO REGISTER FOR A CLASS, EMAIL: TRAINING@WILLOWSWAY.ORG



SUN	MON	TUE	WED	THU	FRI	SAT
					1 ISL HEALTH BASICS (LIZ) UPPER LEVEL 9AM-NOON	2
3	4 ISL NOTES CLASS (Josie) UPPER LEVEL 4:30pm-6:30pm	5 WILLOWS WAY ANNUAL REFRESHER (Monika) UPPER LEVEL 1PM-3PM CPR & FIRST AID (Marissa) LOWER LEVEL 5PM-8PM	6 LEVEL 1 MEDICATION ADMINISTRATION DAY ONE (KIM) 9AM-5PM UPPER LEVEL	7 NEW EMPLOYEE ORIENTATION UPPER LEVEL 9AM-5PM	8 LEVEL 1 MEDICATION ADMINISTRATION DAY TWO (KIM) 9AM-5PM UPPER LEVEL	9
10 HAPPY MOTHER'S DAY	11	12 MEDICATION RECERTIFICATION (KIM) UPPER LEVEL 1PM-5PM	13 MANDT (Monika) 9AM-5PM LOWER LEVEL	14 WILLOWS WAY ANNUAL REFRESHER (Monika) UPPER LEVEL 5PM-7PM	15 EMPATHY WORKS (Monika) UPPER LEVEL 12PM-2PM	16 MANDT (Sparkle) LOWER LEVEL 9AM-5PM
17	18 LEVEL 1 MEDICATION ADMINISTRATION DAY ONE (KIM) 9AM-5PM UPPER LEVEL	19 ISL HEALTH BASICS (LIZ) UPPER LEVEL 1PM-4PM EMPATHY WORKS (Monika) UPPER LEVEL 5PM-7PM	20 NEW EMPLOYEE ORIENTATION UPPER LEVEL 9AM-5PM	21 LEVEL 1 MEDICATION ADMINISTRATION DAY TWO (KIM) 9AM-5PM UPPER LEVEL	22	23
24	25 OFFICE CLOSED! MEMORIAL DAY	26 MEDICATION RECERTIFICATION (KIM) UPPER LEVEL 9AM-1PM	27 PLS: CONFLICT MEDIATION 12:30PM-2:30PM LOWER LEVEL	28 MANDT (Monika) 9AM-5PM LOWER LEVEL	29 WILLOWS WAY ANNUAL REFRESHER (Monika) UPPER LEVEL 10AM-12PM BACK SAFETY (Amazima Safety) 1:30PM-3:30PM LOWER LEVEL	30